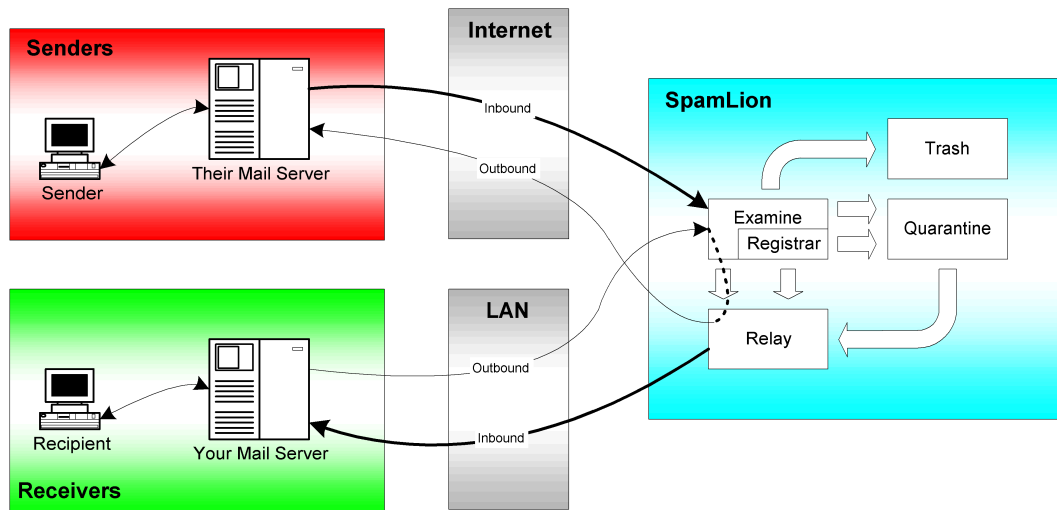


SpamLion Block Diagram



BASIC OPERATION

SpamLion is available as a software product or a hardware device that operates between the Internet and your mail server. It examines the sender's address on every piece of e-mail going in or out of your mail server. SpamLion requests a one-time validation from your sender and records legitimate email addresses, allowing only validated e-mail to enter your inbox.

SpamLion has an easy to use Web interface for configuration, administration, sender registration, and quarantine management. Its focus is to ensure that "people", not mass-mailers are sending you e-mail.

What is it?

Previously, there was only one common process to prevent the delivery of Unsolicited Commercial E-mail (UCE) or "spam". These "filter" systems use special software to identify words, phrases, and known "spam" e-mail addresses. When suspect, they are placed in a "junk mailbox" or are automatically deleted. These programs require extensive administration by both the recipient and IT staff to operate with reasonable effectiveness, which is poor at best.

SpamLion represents a complete paradigm shift in the fight against eliminating spam. The product uses a patented¹ message validation solution that uses an innovative computer program residing on a device (server or appliance) between your mail server and the Internet.

Why does it work?

A Paradigm Shift! Instead of trying to identify unsolicited e-mail through filters, SpamLion merely registers the email addresses that are important to you by asking the sender to register. Unsolicited commercial e-mail (spam) is sent by automated systems that will not be able to respond to a registration request from SpamLion. As these sources can not act on the simple "one-click" registration, their spam doesn't go through to your inbox. Instead it is parked in Quarantine where it will be trashed by SpamLion at a later time.

How does it work?

The Outbound Scenario. Suppose that you send an email to a colleague, friend, business associate; anyone with whom you are expecting to receive a reply. SpamLion examines your outbound message finds the "To:" address and enters it automatically into your registry of legitimate addresses.

Your contact replies to your message. SpamLion examines the inbound message, locates your registry and compares the "From:" address with all the registered email addresses. A match is found and the e-mail is passed on to your mail server, then to your inbox. The message contents are not examined. There are no privacy issues nor e-mail misdirection with SpamLion!

The Inbound Scenario. OK, you've exchanged business cards with a prospect at a trade show. Later, they need more information, so they send you an email requesting specifics on that product that you discussed.

SpamLion sees the email message destined for your mailbox. It finds your SpamLion protected addresses based on the "To:", so it compares the "From:" address to the registry, but does not find it. So, SpamLion holds the e-mail in Quarantine, and sends a registration request back to the original sender. When the sender completes the simple, one-time, registration (as easy as one-click), SpamLion instantly releases the quarantined e-mail to you, and permits future correspondence from this source without challenge.

¹ Patent Pending as of this printing.

Feature Comparison

The following comparison shows the differences between the **Filter** solutions and the **SpamLion** solution.

Feature / Capability	Filter	SpamLion
Reduces reception of undesired messages	~ 70%	100%
Holds questionable message until validated	No	Yes
Notifies sender that they need to be validated	No	Yes
Manage multiple recipients (server based)	Some	Yes
Manage multiple domains (companies)	No	Yes
Registration security levels: e-mail reply, interpret an image, solve a problem ²	No	Yes
Validate via website (one-click)	No	Yes
Interfaces with any SMTP mail server	No	Yes
Works with any mail client	No	Yes
Learns who is communicated with (outbound auto-validation)	No	Yes
Can be installed on a dedicated system	No	Yes
Inherently fault tolerant	No	Yes

Frequently Asked Questions

“All of those automated spammer messages are now collecting in my Quarantine. How do I see what’s inside? What happens to the SPAM?”

SpamLion has an administrative console that runs in a web browser. This console allows you to check the contents of the Quarantine as it’s *learning* who you communication with. Using this console, you can see e-mail header information like To, From, Subject and statistics like message size and date/time. This console allows you to bypass (send through without validating the sender), validate, or delete these held messages. After 30 days (a time period set by the administrator), all that spam will be automatically deleted.

“What happens if I’m a subscriber to a list server that’s automated? Won’t my subscription end up in Quarantine?”

Only at first, then the system will allow it to flow through freely. There are two ways to handle this. If you know the “From:” address, simply send it an e-mail, and SpamLion will automatically register it. The alternative is to use the Admin Console to check the Quarantine to find the “From:” address and click the Validate button, SpamLion will then auto-register it.

“What if I’m using a commercial website that e-mails me a receipt for my purchase. What happens?”

Since you are expecting a quick reply, you check the quarantine using the Admin Console and release the e-mail with or without registering the address.

Benefits and Features

Saves you time and Money!

- Lets you focus on communicating with legitimate people, real customers, vendors, and friends!

Reliably stops bothersome SPAM

- Tracks and validates senders by e-mail address
- Maintains both inclusion and exclusion lists
- Automatically blocks spam from new and unknown sources

Reduces administration effort

- Greatly reduces the need to check a secondary, filtered mail folder to find misdirected messages
- A business class solution that manages messages for multiple recipients, multiple e-mail servers, domains, and companies
- Web based management for individuals to set protection, automated reporting, and automatic “trashing” of spam
- Can synchronize with your mail server, providing a single quarantine for people with multiple aliases or domain names
- Web based administration with real-time system status

Simple registration, great protection

- It “learns” who you communication with, and allows those messages to flow through freely
- New senders need only register once, then they’re validated
- Can supports automated validation for trusted merchants, government agencies, schools, etcetera
- Has various levels of registration difficulty, ensuring there is a person, not a computer sending the message

Reliable and Compatible

- Does not loose messages – they are temporarily stored in Quarantine or Trash containers, for analysis, tracing, or backup
- Inherently fault tolerant using the Internet standard of prioritized mail services, Mail Exchange (MX) records, which reroute mail should the system loose Internet access or be off-line for maintenance
- Independent of the recipient’s mail server, computer operating system, or messaging software
- SpamLion installs on a Windows 2000 server or is available as a hardware appliance, and is fully compatible with UNIX mail, Lotus Notes, Microsoft Exchange, Post.Office, iMail, and all other Internet capable mail servers.

² These Sender Registration security levels are set by the SpamLion administrator to better ensure only people (not machines) can complete a registration. *Interpret an Image* requires the sender view an image, a number or a word, and have to click on, or type it, to become registered. *Solve a problem* requires the sender read a statement, and solve it, such as typing the answer to 2 + 2, or clicking the ‘triangle’ shaped object.